

Course Discover Installation Instructions

MINIMUM SYSTEM REQUIREMENTS FOR COURSE DISCOVER	2
Support Information	2
INSTALL INSTRUCTIONS FOR COURSE DISCOVER	2
A) Standalone Version	2
B) Networkable Version (Windows Network)	3
B.1) How the Networkable Version works	3
B.2) Installing Course Discover on the server	3
B.3) Creating shortcuts to Course Discover using the Client Install Utility	4
B.4) Creating shortcuts to Course Discover manually	5
C) Install for RM Community Connect 3	6
RUNNING COURSE DISCOVER AFTER INSTALLATION	8
RUNNING COURSE DISCOVER FROM THE CD (QUICK START)	8
UNINSTALLING COURSE DISCOVER	8
A) Uninstalling the Standalone Version	8
B) Uninstalling the Networkable Version	8
C) Uninstalling the RM Connect Version	8
INSTALLING THE FLASH PLAYER ON INTERNET EXPLORER	8
ENABLING SCRIPTING ON INTERNET EXPLORER	10
ENABLING COOKIES ON INTERNET EXPLORER	11
Version 6	11
Version 5 or 5.5	13
APPENDIX A: REQUIRED COMPONENTS FOR CLIENT MACHINES OR RM WORKSTATIONS	15

Minimum System Requirements for Course Discover

The following is the minimum requirements for Course Discover, additionally if you are running Course Discover over the network or on an RM system then the client machines (or RM workstations) must have some additional software installed, see [Appendix A](#) for details.

- Pentium 266 processor or equivalent.
- 64MB of available Ram.
- 12x CD-Rom drive.
- Windows NT 4 (with Option Pack), 98SE, ME, 2000 or XP.
- Microsoft Internet Explorer Version 5 or above.
- Macromedia Flash Player 6 (MX) or above installed.
- Scripting and Cookies must be enabled on Internet Explorer.

Support Information

Customer Services Helpline: **0870 160 2008**
Website Address: www.coursediscover.co.uk
Support Website: www.trotmanis.co.uk/coursediscover
E-Mail: enquiries@coursediscover.co.uk
Postal Address: **Course Discover**
TIS
St George's House
Ambrose Street
Cheltenham
Gloucestershire
GL50 3LG

Install Instructions for Course Discover

A) Standalone Version

- 1) Insert the CD on the standalone machine you wish to install on.
- 2) Wait for the install program to start, if the program doesn't start automatically double click **My Computer** on your desktop, then double click the Course Discover CD, if the installation still doesn't start double click the **setup.exe** file in the window that will have opened.
- 3) Follow the install instructions, you will be asked to fill in your Name, Organisation and Serial Number¹. You will have been sent your organisation name and serial number along with the CD. Just use your own name for the name field².
- 4) Once the installation is complete Course Discover will start automatically. However, to run Course Discover double click the **Course Discover** icon on the desktop or in the **Course Discover** folder under your **Start Menu -> Programs**.

¹ Course Discover serial numbers always use zeros and not capital 'o's.

² If you get your organisation or serial number wrong then setup will exit. To restart it double click **My Computer** on your desktop, then double click the Course Discover CD. If the installation still doesn't start, double click the **setup.exe** file in the window that will have opened.

B) Networkable Version (Windows Network)

Before installing the networkable version we recommend you read the following section "[B.1\) How the Networkable Version Works](#)" as this may affect how you install the shortcuts on your client machines, however to get started quickly go to section "[B.2\) Installing Course Discover on the server](#)"

B.1) How the Networkable Version works

Course Discover is browser-based software that runs it's own web server locally on a given port (port 8181), which serves the Course Discover pages.

The network version is the standalone version installed under a shared directory on a server. All that is required for the client machines to be able to access Course Discover over the network is a shortcut to the Course Discover executable on the server, this shortcut must go via a mapped drive as UNC paths will not work.

The requirements for the network version are:

- 1) Course Discover is installed on a server.
- 2) Any directory above the Course Discover directory is shared.
- 3) All the client machines can access that share.
- 4) The clients have the required components installed (see [Appendix A](#)), these are mostly preinstalled windows components (with the exception of *Internet Explorer* and *Flash Player*).

For example, if you installed Course Discover on server *SERVE1*, under **c:\shared files\programs\Course Discover**, and if **shared files** is a shared directory using the share name **SHARE1**. Then the following must be done on all clients:

- a) Map a network drive to **\\SERVE1\SHARE1**, for example **X** drive
- b) Create a shortcut on the desktop (or in **Start Menu -> Programs**) to the **dyncd.exe** executable under **X:\Programs\Course Discover\DynCD**

Therefore if Course Discover is installed on the server under a share that is already a mapped drive on most or all of the clients then it is probably quicker for you to create the shortcuts on the clients manually (see "[B.4\) Creating Shortcuts to Course Discover manually](#)"). Otherwise there is a small utility which will speed up the creation of the shortcuts (and even create the network share if necessary), for details see "[B.3\) Creating Shortcuts to Course Discover using the Client Install](#)".

Now get started by following "[B.2\) Installing Course Discover on the server](#)"

B.2) Installing Course Discover on the server

- 1) Insert the CD on the server you wish to install on.
- 2) Wait for the install program to start, if the install program doesn't start automatically double click **My Computer** on your desktop, then double click the Course Discover CD, if the installation still doesn't start double click the **setup.exe** file in the window that will have opened.

- 3) Follow the install instructions, you will be asked to fill in your Name, Organisation and Serial Number³. You will have been sent your organisation name and serial number along with the CD. Just use your own name for the name field⁴.
- 4) When asked where you wish to install Course Discover (the default is in the **Program Files** directory) then choose a destination that can easily be accessed over the network using a network share or choose the location where you previously had Course Discover installed.
- 5) Towards the end of the installation a dialogue box will ask you *“Would you like to create an install disk to use on all the client machines?”* If you wish to create a floppy disk to help you quickly create shortcuts on all your client machines then click **Yes** and go to [“B.3\) Creating Shortcuts to Course Discover using the Client Install Utility”](#). Alternatively you can now click **No** and create your shortcuts manually, see [“B.4\) Creating Shortcuts to Course Discover manually”](#).

B.3) Creating shortcuts to Course Discover using the Client Install Utility

This assumes you have installed Course Discover on the server by following [“B.2\) Installing Course Discover on the server”](#)

You will have been asked if you wish to create an install disk to use on client machines, if you clicked **Yes** then start from step 1 below, alternatively if you clicked **No** to that dialogue then you can restart this utility by double clicking the **Create Install Disk for Clients.bat** file on the **Course Discover\setup** directory on the server, start at step 2 below if this is the case:

1. The first dialogue asks:
“Would you like to create a new network share to Course Discover?”
If you click **Yes** then a new network share will be created to the **Course Discover** directory, the share name will be **Course Discover**, then go to step 3. Click **No** if you already have a share above the **Course Discover** directory that you wish to use.
2. If you have got to this point then it is assumed you have a share above the **Course Discover** directory on the server. You will then be asked:
“Is Course Discover installed under the 'SHARENAME' share on SERVERNAME?”
If this is the share you wish to use then click **Yes**, if you click **No** then the utility will look for the next share name and ask you this question again for that share. This will continue until you click **Yes** or all the shares have been inspected.
3. You will now see a dialogue saying:
“We must now search your system, another pop-up window will signify we have finished.”
This step looks for the Course Discover files under that share to ensure that

³ Course Discover serial numbers always use zeros and not capital ‘o’s.

⁴ If you get your organisation or serial number wrong then setup will exit. To restart it double click **My Computer** on your desktop, then double click the Course Discover CD. If the installation still doesn’t start double click the **setup.exe** file in the window that will have opened.

there is a valid version of Course Discover. Click **OK** and wait for the next dialogue to appear, please be patient if there are a lot of files under that share.

4. The next dialogue is:
"Do you need a username and password to access this share from the client machines?"
If you need a username and password to access the network share then click **Yes** you will then be asked for the username and password required. Click **No** if no username and password is required.
5. Next you will be asked:
"Would you like to copy the required files to a floppy disk for client installs?"
This will copy the required files for the client shortcut creation onto drive **A**, if you click **Yes** then you will be asked to insert a blank disk. If you click **No** then you will be told that you must copy the files to another kind of removable disk (such as a ZIP disk). The files you need to copy are **shellexecute.exe**, **mapandshortcut.vbs**, and **Create Shortcut on Client.bat**.
6. Once you have copied the files to your floppy disk or other removable disk take this disk to each client machine and double click the **Create Shortcut on Client.bat** file on each one, this should automatically map a drive and create the shortcut.

B.4) Creating shortcuts to Course Discover manually

If you haven't already we suggest reading ["B.1\) How the Networkable Version works"](#) before continuing.

To create a shortcut to Course Discover from your client machines then a network share above the *Course Discover* install directory on the server must be accessible. Additionally all the client machines must have the required components installed on them. See *Appendix A* for the required components.

Follow these instructions on each client machine:

- 1) Open **Windows Explorer**
- 2) If there is already a mapped network drive to a share anywhere above the *Course Discover* installation on the server file system then steps 3 to 5 can be omitted.
- 3) Choose **Tools** then **Map Network Drive**
- 4) Choose a free drive and enter the network share that is above the **Course Discover** program files installed on the server. If such a share does not exist then one needs to be created on the server.
- 5) Ensure the **Reconnect at logon** is checked so that the drive always remains mapped.
- 6) Browse to the new mapped drive and then find the file **dyncd\dyncd.exe** under the **Course Discover** program files installed on the server.
- 7) Right click the **dyncd.exe** file and choose **Send To** then **Desktop (create Shortcut)**. This creates a shortcut on the client desktop.

NOTE: You can copy (or move) this shortcut to under the **Start Menu -> Programs** on each machine if you wish.

C) Install for RM Community Connect 3

These instructions are written for RM Community Connect 3 systems that haven't previously had a Course Discover CD installed. You will find on the CD a Microsoft Installer Package that is suitable for easy distribution on an RM network. Follow these instructions:

1. Within your **Q:\Applications**⁵ directory on your RM server create a directory called **Course Discover**.
2. Within that directory we recommend⁶ you create a directory called **v1.0.0.0**
3. From the root of the Course Discover CD copy the following directories:

Program Files
Shortcuts

and the following files⁷:

Course Discover for RM Connect.msi
Course Discover.ini

to the newly created **Q:\Applications\Course Discover\v1.0.0.0**

4. Edit the file **course discover.ini** located in **Q:\Applications\Course Discover\v1.0.0.0\Program Files\Course Discover\data\etc** in *Notepad* (this is NOT the file you just copied over) and change the **NOTINSTALLED** keywords to reflect your organisation name and serial number⁸ as sent to you with the Course Discover CD.

For example:

```
[Install]
Organisation:    St. Johns College
Serial:          N06A-01923-0B4-876
```

5. Course Discover requires that the target workstations have some additional components installed (see footnote ⁹ for more information) therefore at this point you may want to also copy over the **Flash Player** directory from the root of the Course Discover CD to **Q:\Applications**.

⁵ Q drive should be mapped to **D:\RMNetwork\RMManage\Packages**

⁶ This is recommended because when you receive future updates to Course Discover you will need to put them in a new directory called **v1.1.0.0**, for example, then de-allocate the old version and allocate the new version.

⁷ The associated NAI and REG files are provided for completion but are not required.

⁸ Course Discover serial numbers always use zeros and not capital 'o's.

⁹ Please note that the target workstations must have certain software already installed, see [Appendix A](#) for a full list, however you should only need to worry about two components:

- *Microsoft Internet Explorer version 5* or above
If this is not installed on the workstations then a package will need to be created and allocated before Course Discover will work. It can be downloaded from <http://www.microsoft.com/windows/ie/default.asp>
- *Macromedia Flash Player version 6 (MX)* or above
If this is not installed on the workstations then the MSI for *Flash Player 7* is available on the Course Discover CD, follow the instruction in step 5 above to create a new package, no shortcuts are required.

6. Open the **RM Management Console**, select the **Workstations** option, then right click **Main Site** and choose **Update Package List**. This refreshes the package list with a new package **Course Discover** (and if you did step 5 above then a package called **Flash Player 7** is also created).
7. The package is now ready to be distributed. Allocate the **Course Discover** package to workstations (also allocate the **Flash Player 7** package from step 5 if required) and assign the *Course Discover* shortcut to a program set in the usual way using the **RM Management Console**.

D) Installing an update for RM Community Connect 3

These instructions are written for RM Community Connect 3 systems who are installing a Course Discover CD update. You will find on the CD a Microsoft Installer Package that is suitable for easy distribution on an RM network. Follow these instructions:

1. Within your **Q:\Applications**¹⁰ directory on your RM server you should already have a directory called **Course Discover**. Within that directory we recommend¹¹ you create a directory called **v1.1.0.0**
2. From the root of the Course Discover CD copy the following directories:

Program Files
Shortcuts

and the following files¹²:

Course Discover for RM Connect.msi
Course Discover.ini

to the newly created **Q:\Applications\Course Discover\v1.1.0.0**

3. Copy the file **course discover.ini** located in **Q:\Applications\Course Discover\v1.0.0.0\Program Files\Course Discover\data\etc** into the directory **Q:\Applications\Course Discover\v1.1.0.0\Program Files\Course Discover\data\etc**.
4. Open the **RM Management Console**, select the **Workstations** option, then right click **Main Site** and choose **Update Package List**. This refreshes the package list with a new package **Course Discover**.
5. The package is now ready to be distributed. De-allocate the prior version and then allocate the **Course Discover** package to workstations and assign the *Course Discover* shortcut to a program set in the usual way using the **RM Management Console**.

¹⁰ Q drive should be mapped to **D:\RMNetwork\RMManage\Packages**

¹¹ This is recommended because when you receive future updates to Course Discover you will need to put them in a new directory called **v1.1.0.0**, for example, then de-allocate the old version and allocate the new version.

¹² The associated NAI and REG files are provided for completion but are not required.

Running Course Discover after installation

Double click the **Course Discover** option on the desktop or in the **Course Discover** folder under your **Start Menu -> Programs**

If Course Discover is already running you will get a message to right click on the CD icon in your task bar (bottom right of your screen) and click **Home**, right click on the *Course Discover* icon in the task bar and click **Home**.

Running Course Discover from the CD (Quick Start)

Course Discover can be run from the CD but it isn't recommended as the performance will be slow. However if you wish to run Course Discover from the CD then double click **My Computer** on your desktop and then right click the Course Discover CD and choose **Explore**, double click the **Run Course Discover from the CD** file.

Enter your organisation and serial number when requested¹³.

Uninstalling Course Discover

A) Uninstalling the Standalone Version

Just run the **Uninstall** program in the **Course Discover** folder under your **Start Menu -> Programs**. Alternatively open **Start Menu -> Settings -> Control Panel** and then double click the **Add/Remove Programs**, choose **Course Discover** and then click **Remove**.

B) Uninstalling the Networkable Version

On the server run the **Uninstall** program in the **Course Discover** folder under your **Start Menu -> Programs**. Alternatively open **Start Menu -> Settings -> Control Panel** and then double click the **Add/Remove Programs**, choose **Course Discover** and then click **Remove**.

On the client machines, delete the **Course Discover** shortcut on each desktop. Additionally you may want to disconnect the mapped drive (especially if you used the *Client Install Utility*), right click the mapped network drive in **Windows Explorer** and click **Disconnect**.

C) Uninstalling the RM Connect Version

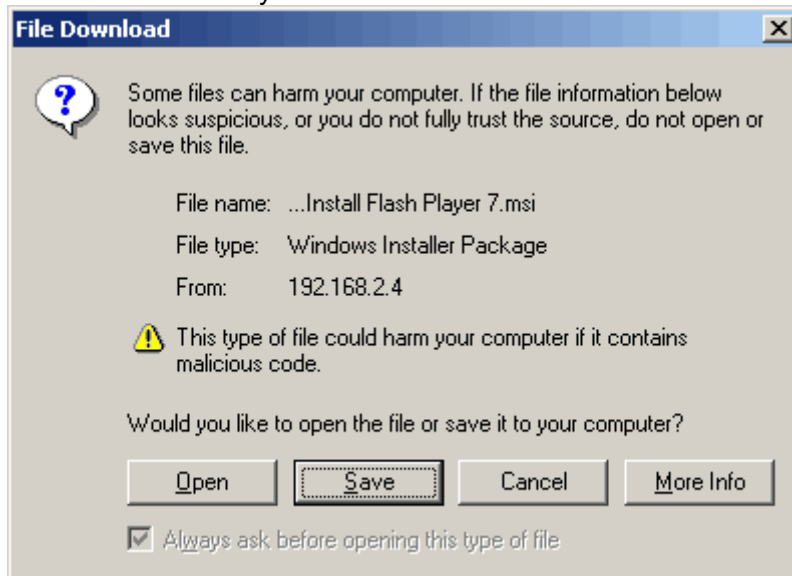
Just de-allocate the **Course Discover** package in the **RM Management Console** for the workstation you wish to uninstall it from.

Installing the Flash Player on Internet Explorer

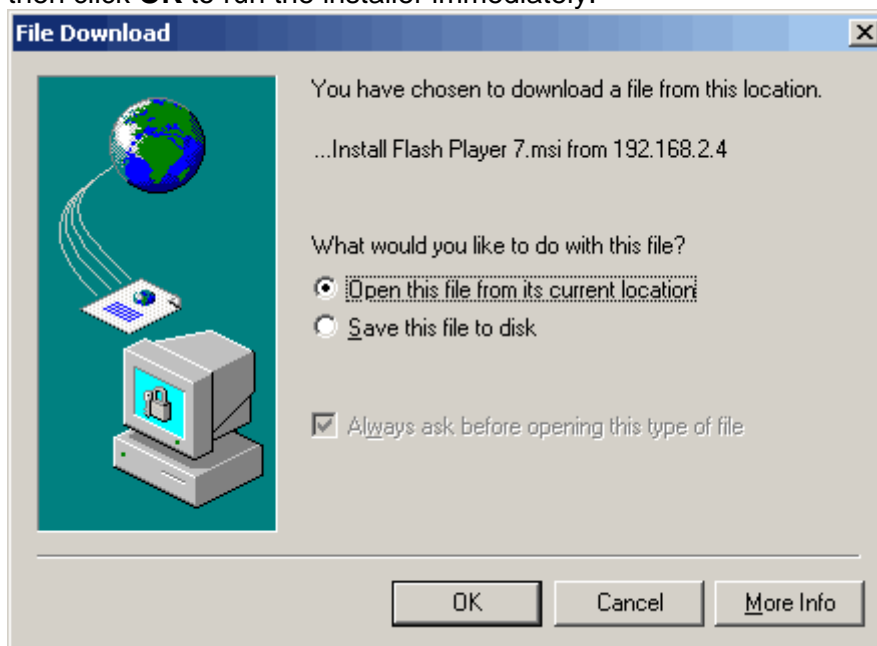
¹³ Course Discover serial numbers also use zeros and not capital 'o's.

You must have at least version 6 (MX) of the Macromedia™ Flash™ Player plug-in installed to run Course Discover. To install the Flash™ plug-in please read these instructions:

1. Click the **click here to install the Flash™ plug-in** link after these instructions in the browser when starting Course Discover to install the plug-in.
2. You may be presented with the dialogue below. Click **Open** to run the installer immediately.



3. Or on older versions of Internet Explorer you may get the following dialogue box. Select the option **Open this program from its current location** and then click **OK** to run the installer immediately.

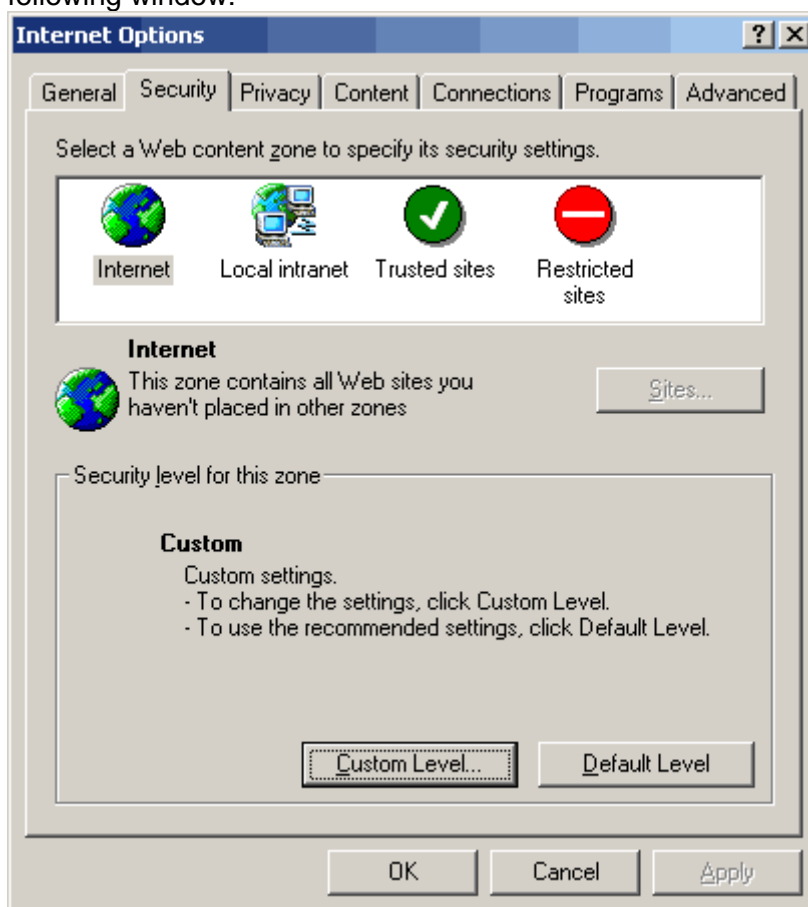


4. A window should briefly pop-up, when it disappears the installation should be complete (you may be asked to restart your computer).
5. If you weren't asked to restart your computer or browser and you are still on this page, just press **F5** or click **Refresh** on your browser to continue, alternatively just restart Course Discover.

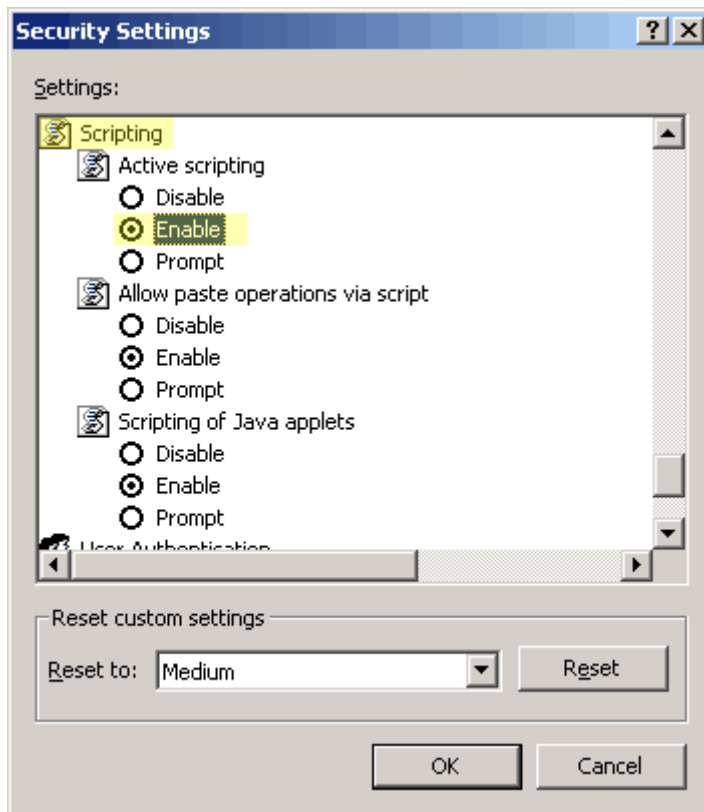
Enabling Scripting on Internet Explorer

Course Discover will not work with scripting disabled, please refer to the following instruction on how to enable scripting on Internet Explorer:

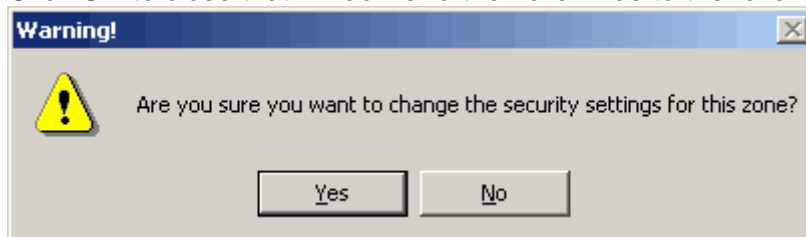
1. On your browser menu click **Tools** and then select **Internet Options...**
2. On the window that pops up click on the **Security** tab at the top to show the following window:



3. Click on **Custom Level**.
4. On the window that pops up scroll down to the **Scripting** section, and click the **Enable** option on the **Active Scripting** section.



5. Click **OK** to close that window and then click **Yes** to the following dialogue:



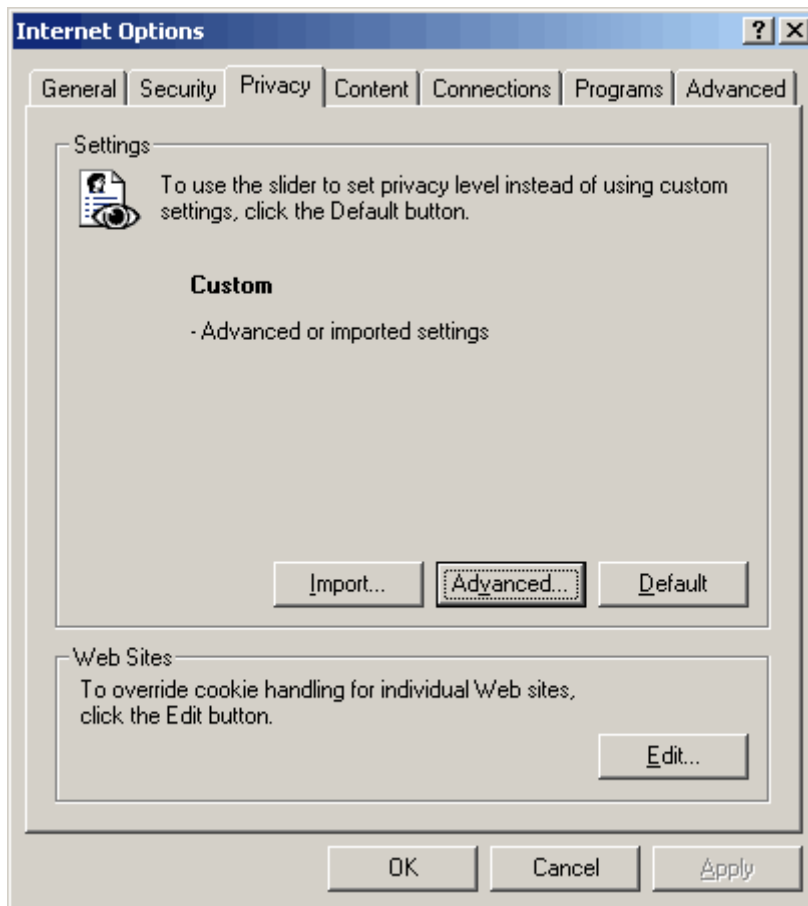
6. Click **OK** again to close the final dialogue box.
7. If you are on the "scriping disabled" warning page on Course Discover then press **F5** on your keyboard or click **Refresh** on your browser to continue.

Enabling Cookies on Internet Explorer

Course Discover will not work with cookies disabled, please refer to the following instruction on how to enable cookies on Internet Explorer:

Version 6

1. On your browser menu click **Tools** and then select **Internet Options...**
2. On the window that pops up click on the **Privacy** tab at the top to show the following window:



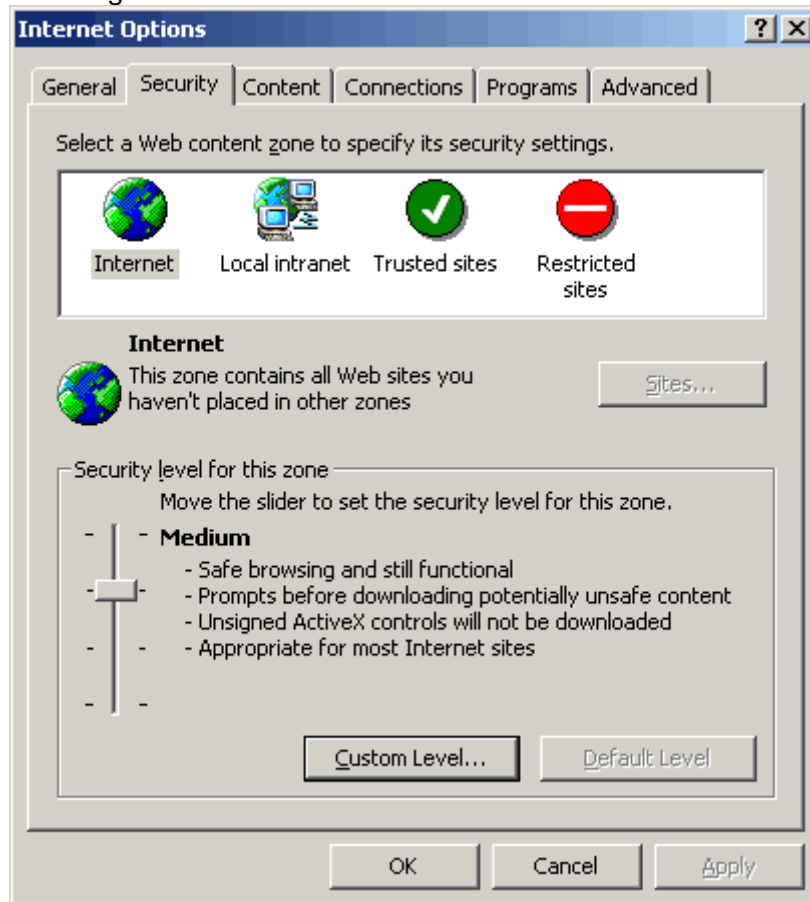
3. Click on **Advanced**.
4. On the window that pops up ensure that **Accept** is selected on the **First party Cookies** section and also ensure that **Always allow session cookies** is selected.



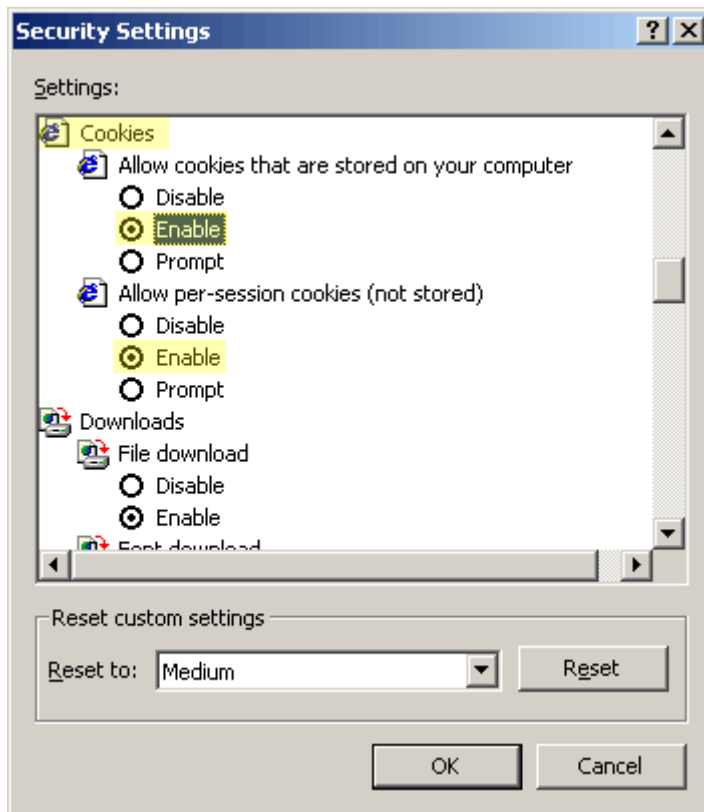
5. Click **OK** and then **OK** again to close the final dialogue box.

Version 5 or 5.5

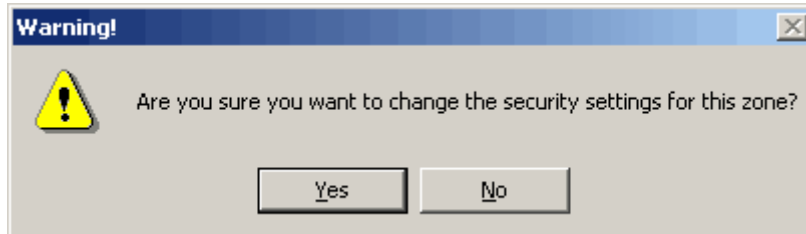
1. On your browser menu click **Tools** and then select **Internet Options...**
2. On the window that pops up click on the **Security** tab at the top to show the following window:



3. Click on **Custom Level**.
4. On the window that pops up scroll down to the **Cookies** section, and ensure that the **Enable** option is selected on both the cookies sections.



5. Click **OK** to close that window and then click **Yes** to the following dialogue:



6. Click **OK** again to close the final dialogue box.

Appendix A: Required components for client machines or RM workstations

Microsoft Internet Explorer version 5 or above

Available from <http://www.microsoft.com/windows/ie/default.asp>

Macromedia Flash Player version 6 (MX) or above

If this is not installed then this is detected by Course Discover and the installation file is on the Course Discover CD.

Microsoft Data Access Components 2.5

This comes with version 5 onwards of Internet Explorer, which is a prerequisite as stated above. Therefore this shouldn't need installing, however it can be downloaded from <http://msdn.microsoft.com/data/downloads/updates/default.aspx - MDACDownloads>

Microsoft Jet Database Engine v4.0

This comes with Microsoft MDAC version 2.5 but not subsequent versions.

This may be a problem for Windows XP in which case it can be downloaded from:

<http://support.microsoft.com/default.aspx?kbid=239114>

For the "*create shortcut on client*" files to work, *Windows Scripting Host version 1.0* or above must be installed. This ships with all our required Windows versions so this should always be present. However it can be downloaded from:

<http://msdn.microsoft.com/library/default.asp?url=/downloads/list/webdev.asp>